

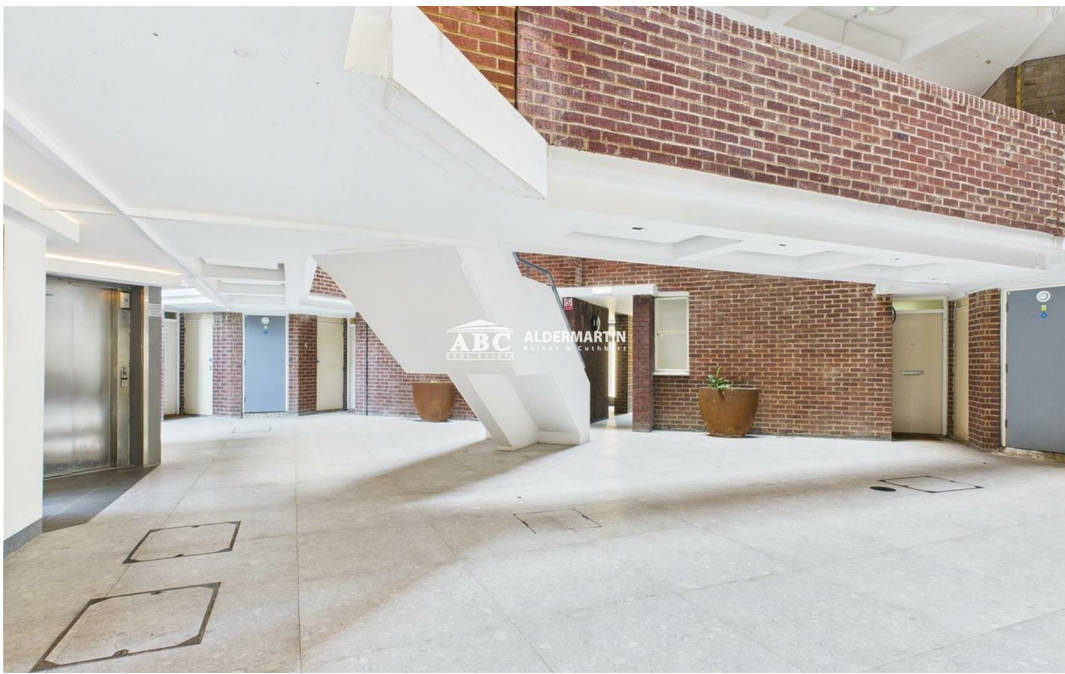


ABC ALDERMARTIN
REAL ESTATE Baines & Cuthbert

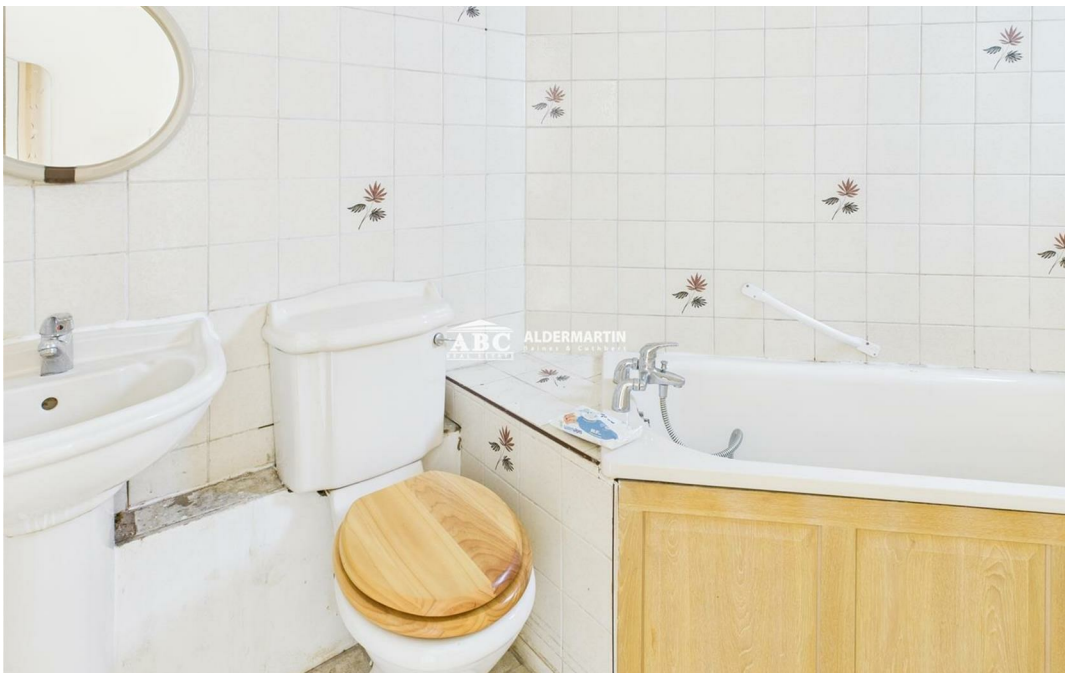
NORMAN COURT

Nether Street, London N3 1QQ

£285,000
Leasehold -







- 1 BEDROOM
- COMMUNAL GARDENS
- COUNCIL TAX BAND C

- SPACIOUS
- GREAT LOCATION
- 24HR CONCIERGE

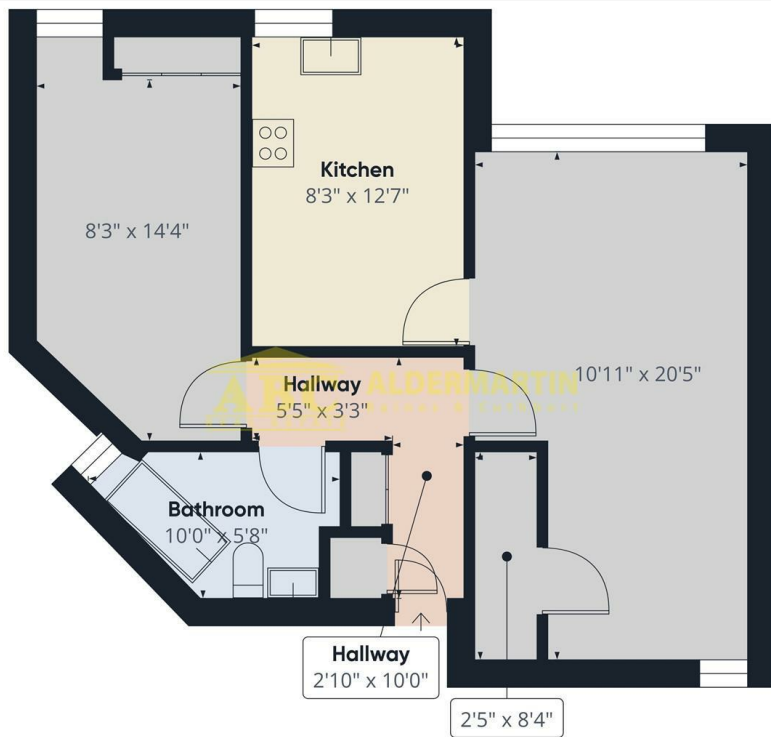
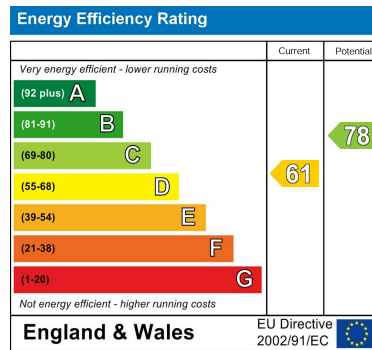
- GATED
- EPC RATING D

A bright and spacious 1 bedroom ground floor apartment situated within the popular Norman Court, N3.

Comprising 1 double bedroom, spacious living room, large separate kitchen, family bathroom and various storage spaces throughout. This property is in need of modernisation, the perfect opportunity for a buyer to put their stamp on the property.

Further benefits include a share of the freehold, 24hr concierge service, gated access, communal gardens and parking.

EPC Rating D
Council Tax Band C



ABC ALDERMARTIN

Approximate total area**
561.44 ft²

(1) Excluding balconies and terraces

While every attempt has been made to ensure accuracy, all measurements are approximate, not to scale. This floor plan is for illustrative purposes only.
Calculations are based on RICS IPMS 3C standard.
GIRAFFE360

DISCLAIMER

In accordance with the 1991 Property Misdescriptions Act, these details, photographs, and the floor plan have been prepared in good faith and as a general guide, not a statement of fact. We have not carried out a survey and the services, appliances and specific fittings have not been tested. Measurements are approximate and where possible taken to the widest point.

Any information regarding lease details, service charges, ground rent etc. have been supplied by our client and to the best of our knowledge is correct. However, we strenuously recommend that you ask your solicitor to ratify it.

For details of our Affiliations, Redress Schemes, Fees, and Complaints Procedure, please visit www.abcestates.co.uk

ABC Hendon Sales
020 8203 4567

